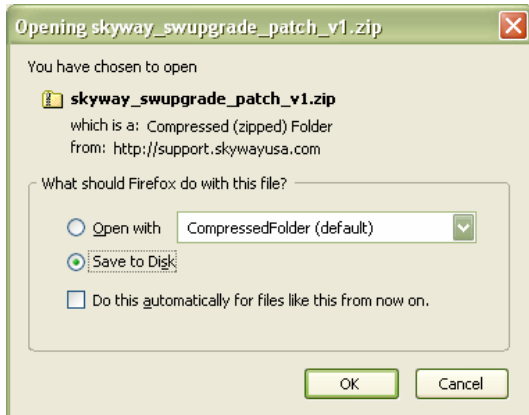


SW20 Modem Patch Instructions (SW20 ONLY)

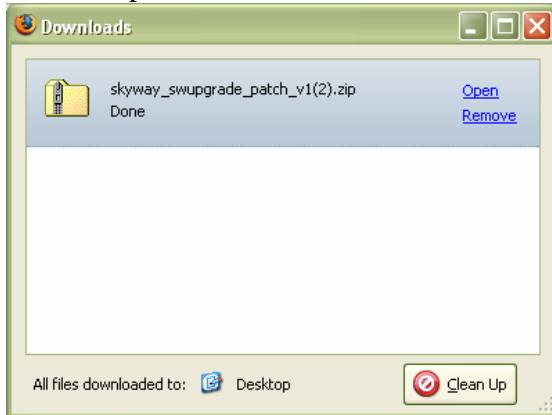
Click on the following link

http://support.skywayusa.com/upgrade/skyway_swupgrade_patch_v1.zip.

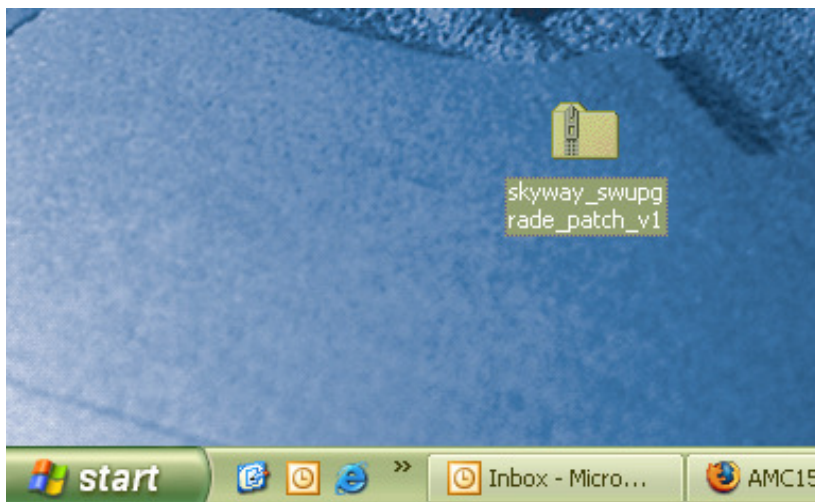
Windows will attempt to save the download patch to the pc. Click the OK button.

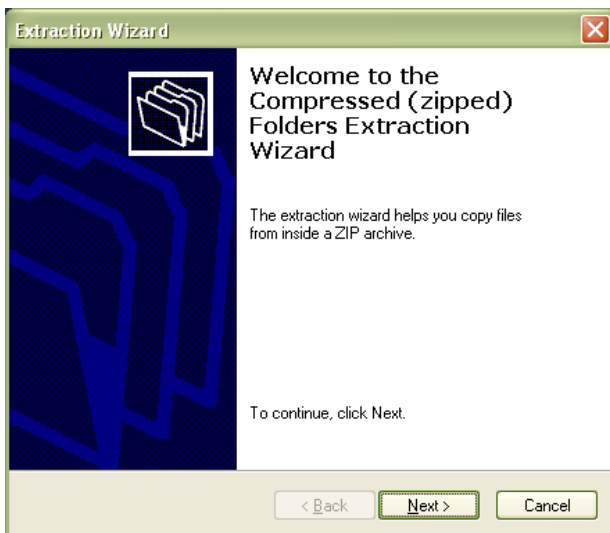


After the patch downloads close the Downloads window.

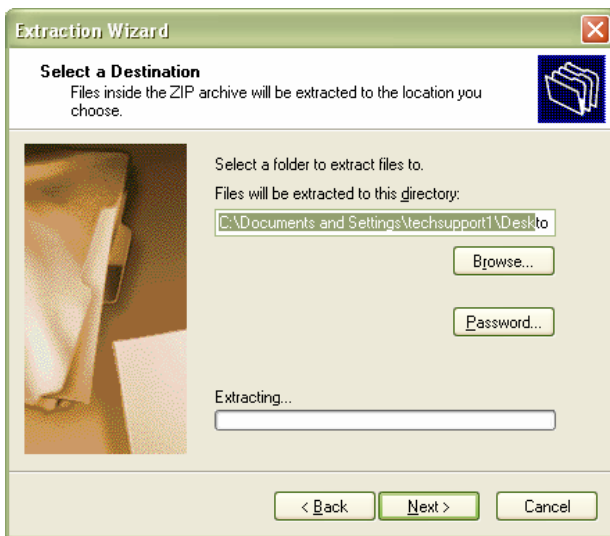


You will see the downloaded file folder. The folder name will be skyway_swupgrade_patch_v1. This folder will be in a zipped format. Right click on the folder and select extract all.

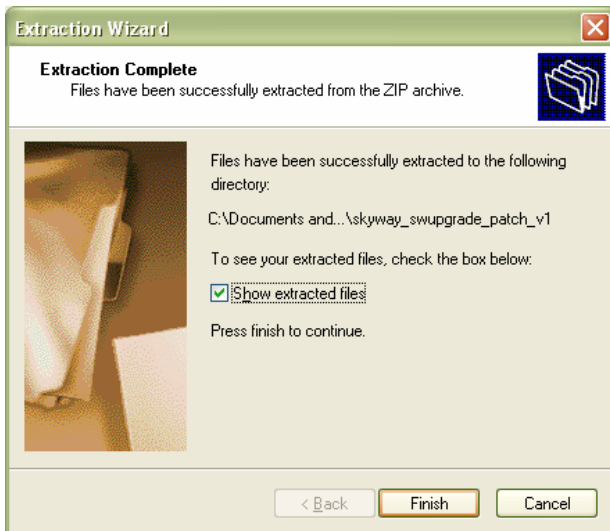




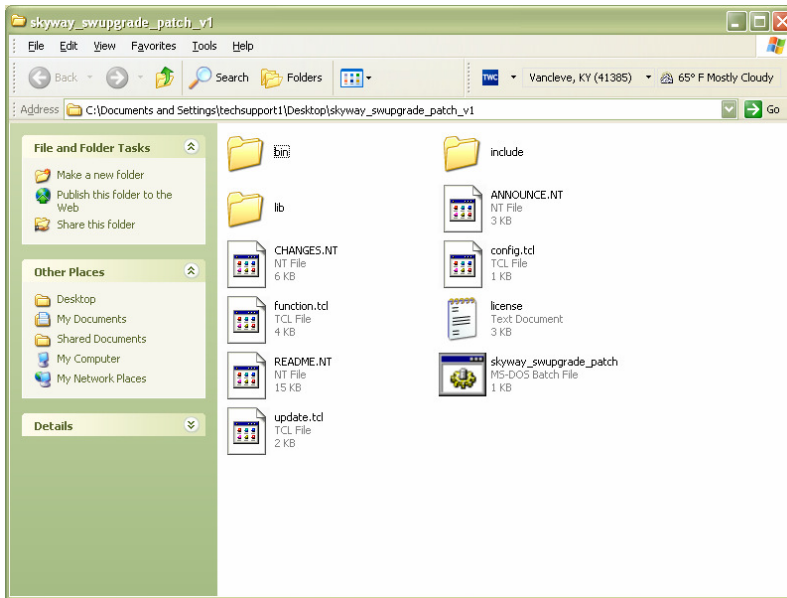
You will have the option to enter the location where you want the files to be extracted to. After you have the location you want click the next button.



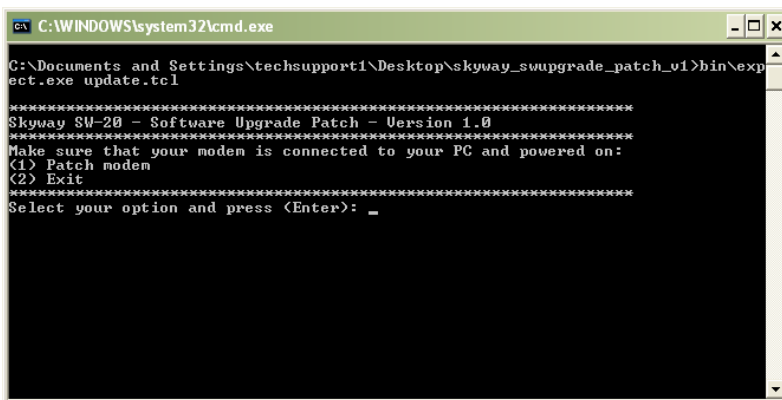
When the files have been extracted you will see a message stating the files were successfully extracted. Click the finish button.



The folder that the files were extracted to will open. Double click the icon labeled skyway_swupgrade_patch



A DOS menu prompt will open and prompt you to make a selection.



Hit the 1 key and then hit the enter key. You will see the message Starting telnet:, the update takes about 30 seconds to 1 minute to complete. After the update has completed the window will close.

